

# Turbo Carbon:

CARBON REPORTING MADE  
SIMPLE, FAST AND AFFORDABLE



Empowering Trust™

UL and the UL logo are trademarks of UL LLC © 2019.



# UL's Turbo Carbon™ software simplifies CO<sub>2</sub> reporting for smaller companies

Reporting carbon emissions is increasingly a must-do for many small to medium-sized businesses. This is driven by new regulatory requirements, pronounced business benefits and a growing awareness of the societal expectations of business to manage their carbon emissions.

UL's Turbo Carbon™ is a purpose-built tool that can enable carbon management by making it simple, fast and affordable.

## Through an online subscription, Turbo Carbon can:

- Educate your company on carbon reporting
- Guide you through a simple activity data collection process
- Calculate the carbon emissions linked to the activity data you have collected
- Generate a UL issued carbon footprint report

Furthermore, UL can provide additional bolt-on services to enhance the value of carbon management to your business.

## New regulatory requirements

To track progress against Paris Agreement commitments, national governments around the world are introducing mandatory carbon reporting programs and carbon pricing schemes. Prominent examples include:

- The U.K. Streamlined Energy and Carbon Reporting (SECR) regulations require companies more than £36 million in annual turnover or 250 employees to report their scope 1 and 2 emissions or other related data
- The South African National Greenhouse and Energy Reporting (NGER) Act requires companies in more than 40 sectors to report their scope 1 emissions
- The Singapore Carbon Pricing Act (CPA) requires any industrial facility that emits equal to or more than 2,000 tons of carbon dioxide equivalent (tCO<sub>2</sub>e) annually to submit an emissions report

## An affordable solution

Turbo Carbon is a simple, fast and affordable solution that strives to make carbon management accessible. Contact us for pricing packages.

# Why use Turbo Carbon?

## UL Turbo Carbon



\* Consulting services are optional extras

## How Turbo Carbon works

Turbo Carbon walks you through the process of carbon reporting in four steps:

### SELF REGISTRATION

**REGISTER YOUR COMPANY**  
Enter your details to register your company on the cr360 system.

**Company details**

Company name:

Country:

Address (4 lines max):

Town or city:

**Contact details**

Contact name:

Contact phone number:

Contact e-mail address:

Please confirm contact e-mail address:

Enter the image text above:

Online registration and payment to access Turbo Carbon features:

- Activation
- Data collection
- Report creation

### ACTIVATION SESSION

**Why manage your Carbon emissions?**

**Comply with mandatory reporting:** 92 mandatory carbon reporting schemes. New focus on SME/Suppliers. E.G. UK SECR, EU NFRD<sup>1</sup>

**Strengthen your relationship with retail customers:** 73% of CDP supply chain members expect to deselect suppliers based on environmental performance<sup>2</sup>

**Lead your industries response to the climate crisis:** Fashion accounts for 6.7% of global CO<sub>2</sub> emissions. It is important to measure and manage this impact<sup>3</sup>

**Enhance your brand reputation with transparency on your impact:** 81% of global consumers say it's extremely or very important for companies to implement programs to improve the environment<sup>4</sup>

**APPAREL'S IMPACT ON CLIMATE**

1. 36%  
2. 28%  
3. 18%

**Polyester Production is Carbon Intensive**

706B kg of GHGs = 185 COAL FIRED POWER PLANT ANNUAL EMISSIONS

**Legend:**  
1. Latest data from WBCSD reporting exchanges. Not all schemes are within the scope of Turbo Carbon  
2. CDP Supply Chain report 2019  
3. Quantis Research Fashion Study 2019  
4. Nielsen Consumer Preference Study 2019

Source: MIT

WORLD RESOURCES INSTITUTE

Purpose-built, multilingual e-learning content to build reporting capabilities and introduce the Turbo Carbon tool

### DATA COLLECTION

**Data Collection**

The following business fundamentals are required for your carbon calculations. Please answer at least one option

Unit	Prestige Worldwide
Total floor space: m <sup>2</sup>	<input type="text"/>
Total Number of Employees: #	<input type="text"/>
Total Production: #	<input type="text"/>
Total Revenue: USD	<input type="text"/>

Please select all of the following that apply so that we can ensure that you are being asked the most relevant questions

Question	Yes	No
I use gaseous fuels (e.g. natural gas) in my operations	<input type="checkbox"/>	<input type="checkbox"/>
I use liquid fuels (e.g. diesel, gasoline) in my operations	<input type="checkbox"/>	<input type="checkbox"/>
I use solid fuels (e.g. coal) within my operations	<input type="checkbox"/>	<input type="checkbox"/>
I use refrigerants & other Ozone depleting substances (e.g. for cooling systems and air-conditioning) in my operations	<input type="checkbox"/>	<input type="checkbox"/>
I own and operate my own transport fleet	<input type="checkbox"/>	<input type="checkbox"/>

Please enter data about purchased electricity and other indirect energy (e.g. heat and steam)

Please enter the quantity of Purchased Electricity used within the reporting period:  kWh

Please enter a Supplier Specific Emission Factor if available:  kgCO<sub>2</sub>/kWh

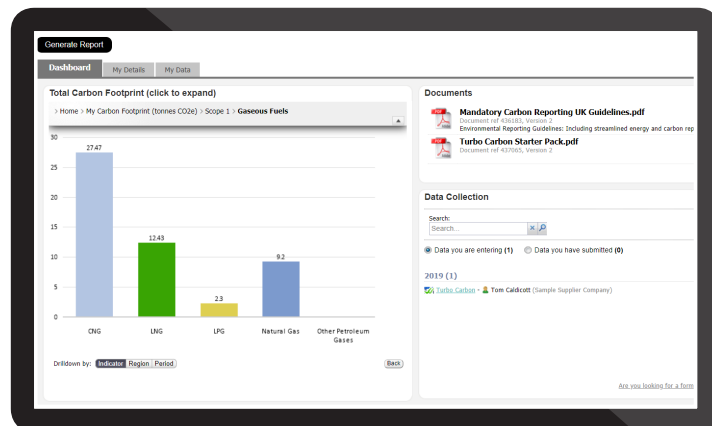
Purchased Heat:  kWh

Purchased Steam:  kWh

Owned and Operated Transport - Please enter the data that is applicable to you

Simple data collection with indicator guidance, multiple units of measure and supporting evidence upload

### REPORT CREATION



Preconfigured dashboard with data collection completion status, online charts and a downloadable PDF report



UL is a trusted provider of industry leading sustainability software for businesses, and you can leverage our industry expertise in carbon reporting to solve your compliance needs. Contact us at [carbon@ul.com](mailto:carbon@ul.com) for pricing packages..

UL and the UL logo are trademarks of UL LLC © 2019.