



# Geosmin/MTB and Taste & Odor

Please read all the instructions before sampling to ensure proper test results.

Please read all the instructions before sampling to ensure proper test results.

## Before Sampling

- Your sampling kit contains the bottles marked below.
- Remove blue refrigerant packs from shipping container and place in freezer. The packs **must be frozen** before returning samples to the laboratory.
- Plan to have samples collected just prior to the normal pick-up time of your **overnight** carrier.

## Sampling Steps

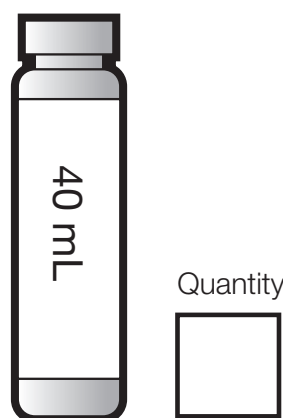
1. For each sampling point 4 vials must be filled.
2. If your sampling point has a faucet with an aerator, it must be removed prior to collection of the sample.
3. Flush the cold water sampling line for 10 minutes before filling vials.
4. **Do not** touch inside of vial, cap or around the edge of the vial.
5. Slow the water stream before collection.
6. Fill vials so that **no air** remains when capped. **Do not overflow!**
7. After tightening the cap, the vial should be inverted and tapped to check for air bubbles.

8. If bubbles are present, do not empty the vial, slowly add several additional drops of water until the air is eliminated.
9. Indicate sampling date, time, site and name of sampler on both the bottle labels and the enclosed Chain of Custody. Information on the Chain of Custody and labels must match and be complete.

## Shipping Instructions

- Place frozen blue refrigerant packs, samples and Chain of Custody into shipping container and return to the laboratory **immediately** after collection.
- Sample bottles must be hand delivered or sent by an **overnight** carrier.
- Laboratory **must be notified** prior to shipment of samples for Saturday delivery.

*Note: If the samples can not be shipped within the same day of sampling please contact the lab.*



Call 1.574.233.4777 or 1.800.332.4345 or visit us at [www.ul.com/water](http://www.ul.com/water)  
UL, 110 S. Hill Street, South Bend, IN 46617